

‘Honest John’ 180 years not out!



Issue 133
Autumn 2023

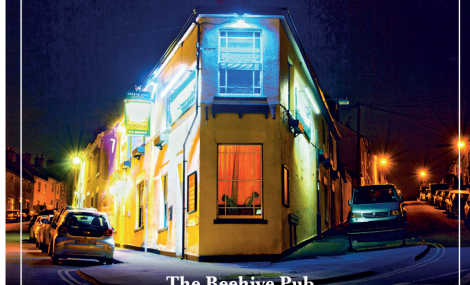
THE RISING TUN by CAMRA

THE BEEHIVE

Swindon's Favourite Local

- Local real ales and craft beers -
- Locally made Pies, Mash and Gravy -
- Regular live music -
- Local art on display around the pub -
- Free Wi-Fi -

Open all day from noon - 7 Days



The Beehive Pub

55 Prospect Hill, Swindon SN1 3JS
T: 01793 523187 E: post@bee-hive.co.uk
www.bee-hive.co.uk



THE GLUE POT

01793 497420

5 Emlyn Square, Swindon, Wiltshire, SN1 5BP

Situated in the heart of Brunel's railway village, the Glue Pot is a fantastic small traditional pub.

The pub is named for the glue pots nearby coachbuilders would bring into the pub at lunchtime and place on the central stove to keep warm.

- ✉ gluepot@hopback.co.uk
- f [gluepotswindon](https://www.facebook.com/gluepotswindon)
- t [gluepothopback](https://twitter.com/gluepothopback)



5 Regular ales
and 2 changing ales

Opening Times

Monday:
4.30pm to 11pm

Tues-Thurs:
12 noon to 11pm

Fri and Sat:
11.30am to 11pm

Sunday:
12noon to 10.30pm

From the Editor..

For the first time you will find no jokes in this issue of the Tun. I am unashamedly devoting this edition almost entirely to Arkell's Brewery. Entering their 180th year, the brewery is Swindon's oldest extant business and one of only 27 family brewers left in the country (but more of this on page 6)

Why do I say unashamedly? Well, it's not a secret that Swindonians have a bizarre habit of rubbishing everything Swindon. If you don't believe me have a look at Facebook comments every time anyone mentions the town centre! Such is the string of vile commentary that you could be forgiven for thinking they'd been physically assaulted, the last time they'd gone to Specsavers!

I want to argue that Arkells suffer from this seemingly ingrained antipathy to anything Swindon. If you step 20 miles outside the town, you will hear nothing but praise for Arkells Real Ales. My daughter lives a stone's throw from the Exmouth Arms in Cheltenham, six ales on the bar and admired as one of the best pubs in Montpelier. Ditto the Duke of Edinburgh in Winkfield, Slough.

If you love pubs, you should love Arkells. Despite the sad loss of the Duke in Gorse Hill, the Boundary House in Moredon and the Plough in Highworth, (sad casualties of the "use it or lose it" syndrome), Arkells have 37 pubs in the Borough of Swindon. That's a huge number by any standard and includes their recent £5 million investment, the Strawberry Thief, Swindon's newest (and if you include the patio) probably the biggest pub in the town.

I have to say that even my own organisation CAMRA don't help matters. To my recollection the Black Horse at Wanborough was the last Arkells pub to win the CAMRA 'Pub of the Year' and right now there are no Arkells pubs in the Good Beer Guide, which surely cannot be right?

Could Arkells themselves do more? The answer has to be yes. Some stunning beers that Alex Arkell comes up with, are gone and forgotten before you can say 'Cheers'.

By adopting more pins, and probably needing to subsidise them for the tenant trade, they could have more variety, much longer, on the Swindon bars. Maybe the best of the specials could even become

core. Why don't we see more of Bees Honey Beer and Moonraker on draught? How about a specialist Arkells Tap somewhere, even Devizes Road, and perhaps a lot more promotions, marketing the company's ale credentials. Despite what Swindonians may think, Arkells is not limited to just 3B's!

Now I recognise real ale is not item 1 at every Arkells board meeting and doing a better job will certainly require more investment, possibly subsidy. Almost certainly finding good tenants, developing the hotel side, making the property portfolio profitable, coping with spiralling hop and grain prices, acquisitions and disposals, running their managed houses better, will all take precedence at those meetings. All require a business priority as getting these wrong could kill off the company, but if you look across their family brewers competitors, you could easily argue most have a better long-term ales policy than does Arkells. Fellow Swindonians, we have a jewel in the crown in Arkells, right here in Swindon. If they had succumbed to approaches from Slater Walker, Punch, Enterprise, Admiral et al over the years, Swindon would today be a pub wasteland. A community with hardly any pubs is the worst for it. Now that really would make great copy for the 'Hate Swindon Facebook brigade!'

John Stooke
Editor

www.swindon.camra.org.uk
editor@swindon.camra.org.uk



SAY HELLO TO TOM AND MAIREAD AT THE STRAWBERRY THIEF

Ever wondered what it would be like to work for Swindon's biggest and longest established family brewer, one of a tiny number of real established family companies left in Swindon?

To find out you need to trek to Tadpole Garden Village like me and talk to Tom and Mairead, who are responsible for Arkell's, the Strawberry Thief. The pub is not hard to find (huge gabled glass and timber structure right at the entrance!) but mine host Tom might be because he is literally all over the place; required he tells me to keep everything running as smooth as clockwork. Anyway I discovered him serving a customer with a monster pizza (which I have to say looked pretty good) and with the said punter happily munching away we sat down in what is a kind of sectioned off annex from the main hospitality area, even though it's in the same building.

Tom, still not quite 30, has been with Arkells since he was a bright eyed, nervous yet optimistic 16 year old, basically doing tables, pots and lots of unseen running around at the Rat Trap in Stratton.

Tom knew at 16 that he was not interested in university and really fancied an apprenticeship in the pub game, and what better place to begin than the Kingsdown and what better tutors than the popular erstwhile landlord team, John and Liz McGregor.

Everyone who knows them will tell you they ran a great pub and when Tom joined they were just kicking off their 13th year in the iconic Stratton alehouse. Apart from being really nice people they were generous teachers.

After brief spells at the White Horse in Whitchurch and the Great Western Hotel, Tom secured his first managerial role back at the Rat Trap (or the Plough to some of us old 'uns still know it)

After a successful time with Mark at Stratton, the next move was out of town, a 50 mile hike to Chipping Norton's Kings Arms. Tom and Mairead mulled over the similar refrain at this point "Why is it that Arkells Ales are so well liked when you escape



the Borough of Swindon but not appreciated that much right here?" Could it be Swindon landlords not persevering with the range of core and special ales now coming through? (my words). The Kings also had letting rooms which introduced third dimension, wet, dry, and stay.

Tom did a three year 'stretch' in Oxfordshire before being rescued when the Sun at Coate Water unexpectedly needed a manager. This suited Tom and Mairead due to their strong Swindon family connections, and they also enjoyed a slightly different challenge, ensuring the 10 beautifully fitted rooms behind The Sun were full all the time.

Eight months into the Sun Inn leadership role, a call came from George Arkell which was a delight, an excitement even but a big ask from anybody. Would Tom and Mairead be interested in taking the helm of a brand-new £5.0 million flagship investment in North Swindon?

This was March 2022 and George Arkell wanted to open on 1 June! Tom said it took him all of 25 seconds to say yes, but in doing so, overlooked the fact he was getting married in six weeks! Anyway the rest is history, and the pub is proving a huge success.

14 very eventful years and still not 30 and now responsible for the brewery's biggest ever new-build investment.

So what's the journey being like? Arkells has 10 managed houses, the other 82 being tenanted, and in the long term, a tenancy, giving them more responsibility for their own business, is likely where they will end up. Tom enjoys the down-to-earth approach of the senior people at Arkells, the fact they not only listen to good ideas but they will act on good ideas and also he also enjoys the feeling of being properly supported.

He, like they, are Swindon people, proud of our community and keen to see it prosper. It's worth mentioning here that the Arkell's philosophy was explained in 2003 by then Chairman Peter Arkell

who said *"Just as we are a family firm from one generation to the next, so, in many instances, is our workforce. Everybody at the brewery is treated as an honorary Arkell. I have always taken the view that this is the right way to run a company. If you expect people to work for you from 9 to 5 every day, then you are obliged to make their working lives as congenial as possible. In my view if you don't like the thought of coming to work there is something wrong with the management"*

Tom sums it up a little differently "Arkells faith in me was a huge confidence boost. I'm determined to repay that faith by delivering not only the newest pub in Swindon, and the most expensive building project, but really making it the best pub experience for our customers"

So there you have it. 16 and unsure what to do with your life? Perhaps you bypass Macdonald's and give the boys up at Kingsdown a bell? Why not?

Ed



The Sun Inn at Coate Water' back in the day

IS ARKELLS IN A CLASS OF ITS OWN?

Those of you who know me, know I like to do a bit of research. When I hear things like “Arkells is of course is the oldest family brewer still going in private hands” I think well are are they? So I thought I’d try to pose the question and then go away and see if I can answer it. So here goes:

“Who is the oldest family brewery still on the same site where it began and whose ownership today and throughout its history, has remained entirely within the founding family?”

Answers anyone? Let’s take a look.

Everyone will quickly throw names in, JW Lees, Timothy Taylor, Adnams surely, Everards, Hall and Woodhouse, definitely Joseph Holt, what about Palmer’s in Bridport? or even Wadworth in Devizes? The list goes on and on and seems endless, so let’s take a closer look at the runners and riders.

George Bateman started at Salem Bridge and are still there today with two Batemans on the board. In the 1980s half the family wanted to sell but George and Pat Bateman and children Stewart and Jocelyn raised enough money to buy out the rest of the family plus a hundred pubs in North Lincolnshire ... BUT old George didn’t start brewing until 1874. Adnams in Southwold? Jonathan Adnams Chairs it and they do some 85,000 imperial barrels but didn’t start there until 1872.

Balthams Brewery Brierley Hill, Staffs, boast five generations of Bathams and now run by brothers Tom and Max but it started in 1877.

Brains then? Famous Welsh Brewers began by Sam Brain in 1882. Charles Brain resigned in 2020 when the brewing ended up with Marstons (Yuk) Elgoods in Wisbeach was established in 1795. Look out. And with fifth-generation Nigel Elgood in the chair it looks good, until we discover the Elgood family didn’t acquire it until 1875.

The huge Leicester brewer Everards then? 170 pubs brewing 50,000 imperial barrels and run today by Richard Everard, fifth-generation of the family, but wait, Everards didn’t begin until 1849.

Felin Foel is the oldest Welsh brewer, now in Llanelli and boasting 60 pubs and back in the day they owned the local tinplate works, which caused

them to be early exponents of tinned ale, but they only began in 1878.

How about Fullers then, surely a yes until 2019 when they packed in brewing in Chiswick and sold the non-pub business on the site to Japanese brewers Asahi.

Hall and Woodhouse arrived in Swindon in 2018 and have three of the Woodhouse family still on the board, but George Woodhouse was with Anstey Brewery up until 1847 when he decided to become his own boss and begin the brewery.

Holdens in Dudley have 18 pubs and three of the Holden family still on the board but they are real newcomers in this context ... beginning during the war in 1915 (odd thing to do?).

Cheetham Manchester’s iconic brewer Joseph Holt has Richard Kershaw as CEO and he is the great,great-grandson of Joseph Holt himself and oversees 127 pubs HOWEVER “founded in 1849” is their strapline!

Hook Norton Steam Brewery with 47 pubs and employing 50 people is family owned but again didn’t kick off until 1849.

How about Hydes in Salford, with Chris Hyde still on the board? ... but even if they hadn’t moved locations from Moss Side in 2012, it still boasts 1863 as its birthday.

Mc Mullens in Hertford began in 1827, 16 years before honest John and MD is Tom Mc Mullen but they only arrived at their present Hertford location in 1891.

Palmer’s in Bridport are the south coast entrant to this competition and the only thatched brewery remaining in the country. With 56 pubs they argue they began in 1794 but closer scrutiny of origins reveals that JC and RH Palmer bought the Dundry Brewery in 1896.

Robinsons is another iconic North Country name and surely are certainly in with a shout? The Stockport brewery boasts 300 pubs and is run by fifth and sixth generation Robinsons but old George Robinson first got his mash tun in 1849.

Shepherd Neame then absolutely without any doubt? Beginning In 1698 with Jonathan Neame as director today, surely a winner but prior to 1850 it was known as Shepherd and Mares. In 1864 Percy

Neame joined the business so whilst John Neame is there today, his ancestor didn't appear on the scene until 1864.

Theakstons is the second largest brewer in family ownership. The Masham brewery however was sold in 1984 to Matthew Brown who themselves were taken over by Scottish & Newcastle. Simon Theakston took it independent again in 2003 and is now established brewing back at Masham.

Daniel Thwaites began his brewery in 1807 and the present regime, the Yerburch family, are descendants of the original owners but Lancaster Bomber and Wainwright are now brewed by Heineken. In fairness they still have 270 pubs but that's not relevant.

Timothy Taylor must be a good prospect but the Keighley brewer did not begin until 1858, added to which, unfortunately the last Taylor family member, retired in 2014. Sorry

A good local candidate must be Wadworths. Old Henry, partner of John Smith-Bartholomew and Toby and brother Charles Smith-Bartholomew are still in control with John as Chairman and boasting an impressive 150 pubs. Henry had no male heir but this actually doesn't matter for our purposes, because Henry didn't kick off his brewing until 1875. So is Arkells really number one?

Well two more very impressive candidates are still in the competition, Harveys down in Sussex and JW Lees in Middleton Manchester.

JW Lees was started by John in 1828 in his Greengate brewery which still occupies the same site today, a full 15 years before our John. With 150 pubs and three hotels it still has sixth generation

Lees-Jones family heavily represented on the board. It's case seems unassailable BUT WAIT ... on December 4, 2021 a Morning Advertiser article admired Dick Lees-Jones as "the modern founder of JW Lees". Apparently in June 1955 he bought out all the other shareholders to return the brewery to family ownership. Oh dear.

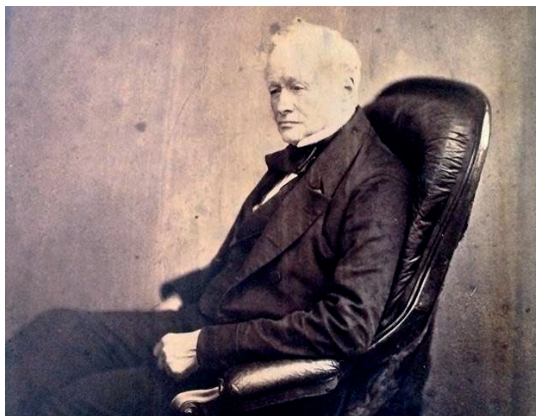
So it is Harveys Brewery in Lewes then. This was probably always going to be the best contender, their presence on their Bridge Wharf site since John Harvey started in 1790, (although the site was much rebuilt in 1880), privately owned, same family throughout? They did not actually began brewing beer until 1820. Prior to this they were a Sherry and Claret house... but this was still 23 years before John. With 45 pubs, their classic Harvey's Sussex bitter remaining a flagship and with eighth generation Harvey's populating the board can they lose out at the last, can they?? HOLD ON... (and I'm sure head brewer Miles Jenner won't like this) but his father Tony Jenner was given a shareholding in the brewery in the mid-70s for basically saving the company from closure, so as such, this rules out Harveys on the basis that the question requires the ownership to have remained entirely within the family throughout! Sorry about this Miles.

So I declare the winner and the crown goes to J.Arkell and Sons, the oldest family brewer still on the same site and whose ownership today and throughout its history has remained entirely within the founding family. Well done you all at Kingsdown!

Ed



John William Lees



John Harvey

ARKELLS QUIZ



So you think you know about Arkells eh?

- Which Arkell's pub is farthest from their Kingsdown Brewery?
- Which is the oldest Arkell's establishment still going strong today and what year did John open it?
- How many Pubs and Hotels does Arkells have in its estate?
- How much did Arkell's newest venture, the Strawberry Thief cost to build?
- How many pints of 3B's were sold at The Strawberry Thief in its first year of trading?
- In which Arkells Pub did a riot (the only riot in Swindon) begin inside and out, and when was this?
- Which was the first Pub that John Arkell ever became involved with and what date?
- How many pints of 3B's does Alex Arkell brew every year?
- How many generations of family are there between John .. and today George and Alex Arkell?
- What was the original name of Arkell's Pub now known as the Rat Trap?
- Are Arkells the oldest independent, privately owned, family run brewer still operating from its original premises, in the whole country?
- Which was the only local Arkells Pub ever to win the CAMRA Pub of the Year Award?
- Sarah Purce was an iconic Arkell's landlady, but which Pub, and how tall was she?
- In 1923, Oliver Arkell was the first person documented to buy a particular brand of sports car, Which car was it?
- Behind the brewhouse in Kingsdown stands one of Stratton's most familiar landmarks, the brewery chimney. When was it built?
- Who in the Arkell family made careers in the GWR and not the brewery. Who were they and what did they do?

And Finally

- Advertising from one local brewery actually keeps this small publication going. Name that brewery.

(Answers on Page 15)

ARKELLS ON TOUR

Whilst here in Swindon, Arkells are perhaps taken a little for granted, drive just 20 miles or more in any direction and customers can't get enough of Arkells; lets take a quick look...



The Carpenters Arms, Newbury RG20 9JY



The Stag, Stowe-in-the-Wold GL54 1AF



The Punchbowl, Woodstock OX20 1TR



The Talbot, Eynsham OX29 4BT



The Rickety Press, Jericho, Oxford OX2 6DE



The Woodpecker, Newbury RG20 0LU

OUT OF SIGHT

A stroll down memory lane...



The Masons Arms 1804 - 1969



The Three Tuns 1780 - 2010



The Mechanics Arms 1873 - 1961



The Bakers Arms 1846 - 2012



The New Inn 1869 - 1970



The Lamb and Flag 1854 - 2010

BUT MAYBE NOT OUT OF MIND



The Duke of Wellington 1869 - 2013



The Gardeners Arms 1865 - 1979



The Black Horse, Wanborough 1862 - 2012



The Curriers Arms Royal Wootton Bassett 1894 - 2016



The Plough, Highworth 1841 - 2022



The Artillery Arms 1851 - 1936



The Crown in the High Street, Blunsdon was closed in 1921 and was famously landlarded by the proud Hunt-Titcombe family. This is one of my favourite images outside the Crown which interestingly was not an Arkells pub, it was a free house, but they were good customers of the brewery. In this image you can see two regulars at the Crown enjoying a '36' of Arkells 3B's. On the left is Fred Norris of Hatchers Farm and on the right Jack Ball who was a local haulier. They were most likely watching the cricket on the green, a pipe and a decent pint. What's not to like?

FACT CHECK

(who'd have thought it?)

I wanted to get a feel for just how Swindoncentric Arkells is, so I established three arbitrary categories

1. Swindon urban pubs 2. Swindon area pubs including Wootton Bassett, Highworth, Badbury, Liddington et cetera and 3. Arkell's regional pubs, that is more than 10 miles from Swindon ... then did the maths.

Category 1 is 28 pubs

Category 2 is 25 pubs

Category 3 is 39 pubs

OK not very scientific but could be a surprise to many.



Back in the day the pub was the centre of the community and before the regular 'Chara' outings there was an obligatory photo. This is outside that iconic pub, The Duke of Wellington, the last Arkells pub that sold ale directly from the wood. Year? I'd guess 1946 ish. I have many of these images and sometimes look at the faces and try to imagine their lives.

HISTORICALLY SPEAKING...

Many histories of Arkells have been written and this is my modest attempts to emulate those. I confess to having drawn on information provided by foremost Stratton historian Nigel Chalk in the preparation of this story. Puslinch, Ontario, Canada is in Wellington County and made up of 13 communities. It is famous for the fine spring aquifer that feeds the township.

Following travel across the USA, John and cousin Thomas settled in this area in 1831 and founded Arkell, one of the Puslinch communities. Arkell Spring Trail and Arkell Road follow the Erasma River to Eden Mills. It is a common stop off for cyclists exploring the outskirts of the city of Guelph. One of three township breweries today, the Wellington, have an Arkell Best bitter named in memory of old John.

After less than two years John became homesick and returned to the family farm in Kempsford in 1833 to marry Elizabeth. By 1843 he had accumulated money and with William Large and Robert Arkell set up his brewery in Stratton. In 1846 John bought out his two partners and became sole owner.

John and Elizabeth were to have nine children of which the youngest son, James and the eldest Thomas, were to follow John into the family business. Elizabeth Arkell passed away in 1858 and in 1860 John remarried, this time Francis Weatherstone from Windrush in Gloucestershire.

At 3.00 PM on 2 March 1848, Messrs Dore and Fidel, auctioneers, offered seven attractive lots at the Goddard Arms Hotel. This included the Kingsdown Inn (a newly erected commodious inn with onsite brewery) and six lots of mixed land and cottages around what we now know as Kingsdown Crossroads. This doesn't quite fit with anything else I know but it was reported in the Salisbury and Winchester Journal and the

Devizes and Wilts Gazette in the February. We know there was a downturn in the GWR at this time and it's possible John was overextended and needed capital to expand by selling freeholds and leasing back?

Anyway, whatever happened the pub and brewery did not find a buyer and by September 1869 the Devizes and Wilts Gazette was reporting a hay rick on fire caused by a spark from the chimney of John Arkell's Kingsdown Brewery.

In 1848 he began an advertising campaign with Kingsdown AO and Porter advertised in the local paper is available directly to families in casks of 4 1/2, 9, 18 and 36 gallons (yes really 36 gallons for a family!). 4X was 1s 6d, 3X 1s 4d, 2X 1 shilling only and 0D and table 6d. I assume these were differing alcohol content?

1856 he had leased the Carriers Arms in Cricklade Street in Swindon's Old Town (later the Lord Raglan)

These could have been tough years, because it was not until 1861 that John was able to buy his next pub, the George in Kempsford, (where else). The same year he set up the Steam Brewery at Kingsdown which he extended again 1867 and incorporated the old pub brewery into offices, building a spanking new modern edifice across the road.



A half pint mug dating from Thomas Arkells subsequent purchase of the Raglan. He installed Angelo Vitti as landlord in 1899.



The New Kingsdown Ediface which was built in 1868

Whatever struggles he encountered, he now seemed to be on a roll acquiring the Highworth Fox (1862) the Cirencester Golden Cross (1867) the Crown Stratton, the Brewers in Cirencester and the Great Western Hotel in Swindon (1868), the Eight Bells in Fairford and the Duke of Wellington in Eastcott in 1869. In 1877 a long maltings were added to the Kingsdown site. By the time of John passed on in 1881 the estate numbered 30 public houses. Not only had John overcome recessions and built the foundations of a stunning business, he had endeared himself to his workforce and to the town, for example, following Brunel's lead and building a row of model houses for his employees in Ermin Street. John died on 21 October 1881 and was mourned by the local community who knew him as 'Honest John'. The Advertiser noted that shops were closed and blinds were drawn as a funeral cortege past Stratton church and added "He was open and above board and radical in all he said and did. The poor has lost a good friend, a plain and simple friend". John was buried in the family tomb on 26 October 1881.

Writing a decent history of Arkells is a tough ask because there is so much of it. John was succeeded by sons Thomas and James and Thomas led the business continuing the development of the pub estate, adding the Carpenters Arms at South Marston (1881) the Running Horse or the Runner now (1883) the

Saracens Head (1883) the Angel in Purton (1884) the New Inn, Stratton (also 1884) the Kings Arms in Wood Street (1885), the Lamb and Flag (1886) Wroughton's Three Turns (1889) the Sun Inn (1890) the Black Horse in Wanborough (1891) the Freke Arms (1892) the Bakers in Stratton (1896) the Plough in Highworth (1896) the County Ground (1897) the Rat Trap (1889) and the Plough in Fairford (1900)

10 years later in 1910 we see the first evidence of 3B's entering the portfolio.

In 1896 the company's long and close relationship with Swindon Town Football Club began, with Thomas loaning the club £300 to build their first stand.

Two members of the Arkell family made their careers in the GWR works. Henry Arkell worked there as a draughtsman between 1890 to 1939. Son Oswald Arkell was in the same office between 1924 and 1949. Oswald's service was disrupted by the war where he served in Egypt, India and Burma before returning to the drawing office. The Arkell family name appears on the wall of names at STEAM Museum.

Unlike many breweries, historically Arkells had never seen the free trade as a big opportunity, choosing instead their own channels to market. Following the reign of Thomas and James, which ended in 1925 with James's death, the business passed to T.Noel and J. Graham Arkell (no prizes for guessing the first names) and Oliver Arkell, grandsons of 'Honest John'. In 1927, under Noels guidance, the business became a private limited company with Noel and Graham as directors. Noel played a big part in steering the company through the war years and right up to his death in 1981, (he became Sir Noel on 11 June 1938). He introduced Ace Mineral Water as a brand, was keen on the workmen's club concept, building the Crossways Club in 1933 (later the Moonrakers in 1953). He opened several off licences, the best known in the Railway Village in East Street, and had a different view of the trade opportunities. So in 1972 he purchased

Brown and Plummer wine merchants, hidden as they were in the cellars of the then magnificent Old Town Hall, now a fire damaged ruin which refuses to fall down!

He encouraged cousin Deryck Arkell to come on board to spearhead this push toward the free trade of which the wine merchant was a major component.

His son Peter had been working at Hammonds Brewery in York, and in order he could devote more time to his beloved angling, from 1971 Sir Noel asked Peter to return. On Noel's death, Peter became Chairman and his son James, Managing Director.



Mechanics Arms, Lost along with the demolition of Cheltenham Street.

Peter's big challenge was to negotiate significant changes in the estate with the developments in new and old Swindon which led to the loss of the Mason's Arms, the Mechanics in Cheltenham Street and the New Inn behind what was then Marks and Spencer. There was a plan to replace the New Inn with an even newer Inn within the Brunel Centre but in the end Peter decided it was not financially viable.

Today of course the Chair belongs to James, and his sons George and Alex are key figures in the business.

CAMRA members will recall our local founder David Backhouse's unbridled enthusiasm for the brand. Also head brewer Don Bracher who

created Moonlight in secret to commemorate Peter's wartime experiences behind enemy lines and the presentation in 2021 to Jim Burdock who completed 54 years with the company joining as a bright-eyed 15 year old.



Originally to be an Arkells Pub which didn't happen. Based on history, Peter was spot on.

Today for members of the Arkell family remain at the helm. Chairman James Arkell, his cousin Nick Arkell is Head of Sales and James's sons George and Alex Arkell are Managing Director and Head Brewer, respectively.

In 2023, and not before time, Stratton Parish Council paid for a blue plaque to be unveiled in Kingsdown, in honour of founder John Arkell.

Ed

QUIZ ANSWERS

- 1) Duke of Edinburgh, Winkfield, Slough
- 2) Kingsdown 1843 3) 92 4) £5million 5) 4790
- 6) Artillery Arms 1880 7) Lord Raglan 1856
- 8) 500,000 9) 5 10) The Plough 11) Yes
- 12) The Black Horse, Wanborough
- 13) Sally Pussey 5ft 1in 14) MG Sports
- 15) 1937
- 16) Henry Arkell and Oswald Arkell, They were in the Drawing Office
- 17) Arkells of course (and our thanks)

MEETINGS DIARY

(All begin at 8.00pm)

9th October

Hop Inn, Devizes Road.

13th November

The Manor, Cheney Manor Road.

4th December

Shield and Dagger, Thames Avenue.

8th January 2024

The Goddard Arms, High Street.

PUB NEWS

Martin and Alison Goodfellow at the **Greyhound** have celebrated their 35th year in charge although it nearly didn't happen because on July 4, 1988 they were completely flooded out! **The Oddfellows** located in the village of Manton near Marlborough have applied for asset of community status supported by Brewer Wadsworth. Sunny Patel has left the **Patriot's Arms** Chiseldon after some financial difficulty, it's agreed he did a great community job and the village is sorry to see him go. Members expressed concern that the real ale bar at **The Steam Railway** seems to be closed up. **The Goddard Arms** now has Proper Job regularly on the bar. **The Crown Broad Hinton** now have new tenants in place although no food is being served at present. **The Cross Keys at Wanborough** shows no sign of reopening and similarly **The Crumpled Horn** continues to be out of use. **The Five Bells** at Royal Wootton Bassett reported a successful beer festival as did the **Glue Pot** in Emlyn Square. **The Highworth Wine Bar** has 2 to 3 real ales on normally, definitely worth a look. **The Tupenny** in Devizes Road may relocate farther down on the corner of Newport Street. **The Wagon and Horses** in Wootton Bassett is no open but still seems to be for sale at £280,000. **The Goddard Arms** at Cliffe Pypard is still available if you have half a million £'s spare!

BREWERY NEWS

Wadsworth's New Brewery in Devizes is now up and running and they are in the process of moving from the historic Northgate Street site. Interestingly there is no tap room and the brewery is not open for members of the public.

Ramsbury Brewery have done well in the taste awards winning accolades for both its beer and vodka, especially commended was its Bellapaur IPA.

They are also the main sponsors of the Newbury show this year.

Rusty Garage have planning permission for a new brewery in Rodbourne Road but there may be a hitch over neighbour objections

Vibesh Brewery are introducing a new sour IPA with hints of melon and using Citra hops

Plain Ales Brewery near Salisbury have installed a state-of-the-art golf simulator in their tap they are also brewing incognito Port Stout

Arkells Brewery have two seasonal beers available at the moment, Big Hit and Tradition

Broad Town Brewery are now brewing Black llama again, a 4.8 with excellent body

BEER FESTIVALS NEWS

The 35th Swindon Beer Festival will be held at the STEAM Museum, Fire Fly Avenue, Swindon, SN2 2EY from Thursday 19th to Saturday 21st October 2023

There will be 4 sessions featuring 90 Ales plus Ciders and Perries:-

Thursday 19th October

6pm to 11pm
admission £10.00

Friday 20th October

11am to 4pm
admission £10.00 (inc. £2 Tokens)

Friday 20th October

6pm to 11pm
admission £15.00 (inc. £5 Tokens)

Saturday 21st October

11am to 7pm
admission £5.00

For each session you can pay at the door **except on Friday evening**, for which admission is by **advance ticket** only. The Friday ticket includes £5 worth of beer tokens. They will be available now from:

The Glue Pot, 5 Emlyn Square, Swindon SN1 5BP
The Hop Inn, 8 Devizes Road, Swindon SN1 4BJ

Electronic tickets will also be available in advance for all sessions. For more information visit swindon.camra.org.uk The admission fee includes a souvenir glass and programme. There will be £3 of free beer tokens for CAMRA members and all sessions will have food available.



CAMPAIGN
FOR
REAL ALE

STEAM 

Museum of the Great Western Railway

SWINDON BEER FESTIVAL

At the STEAM Museum

Thursday 19th • Friday 20th • Saturday 21st

October 2023

Tickets on sale from
1st September at:

The Glue Pot
SN1 5BP

The Hop Inn
SN1 4BJ

Or online:
swindon.camra.org.uk



JOIN US AT CAMRA....COME ALONG, MEET NEW FRIENDS, GET INVOLVED...

You perhaps pick up the 'Tun' occasionally, or maybe this is your first time, and you get to this last bit and think ... Why should I bother to join? What's the offer ... terrific fresh real ale, chance to get away and chat, the company of warm, welcoming, like minded friends, and knowing you play a part in one of the biggest and

most successful pressure groups in UK history. We meet monthly and organise lots of social events. Give it some serious thought. If you are still not quite sure, why not call Richard on Swindon 618921 and chat it over.

Be part of the CAMRA story

Real ale is just the start...

Our story is your story.
So join us in supporting
everything from pubs and
drinkers rights, to licensees
and breweries, uniting us
in the story we all love.

To thank you for being a hero
in our story, you receive great
membership benefits, such as
£30 of beer vouchers, quarterly
BEER magazine, access to the
online news platform **What's
Brewing**, partner **benefits and
discounts**... just a few perks
of joining us.

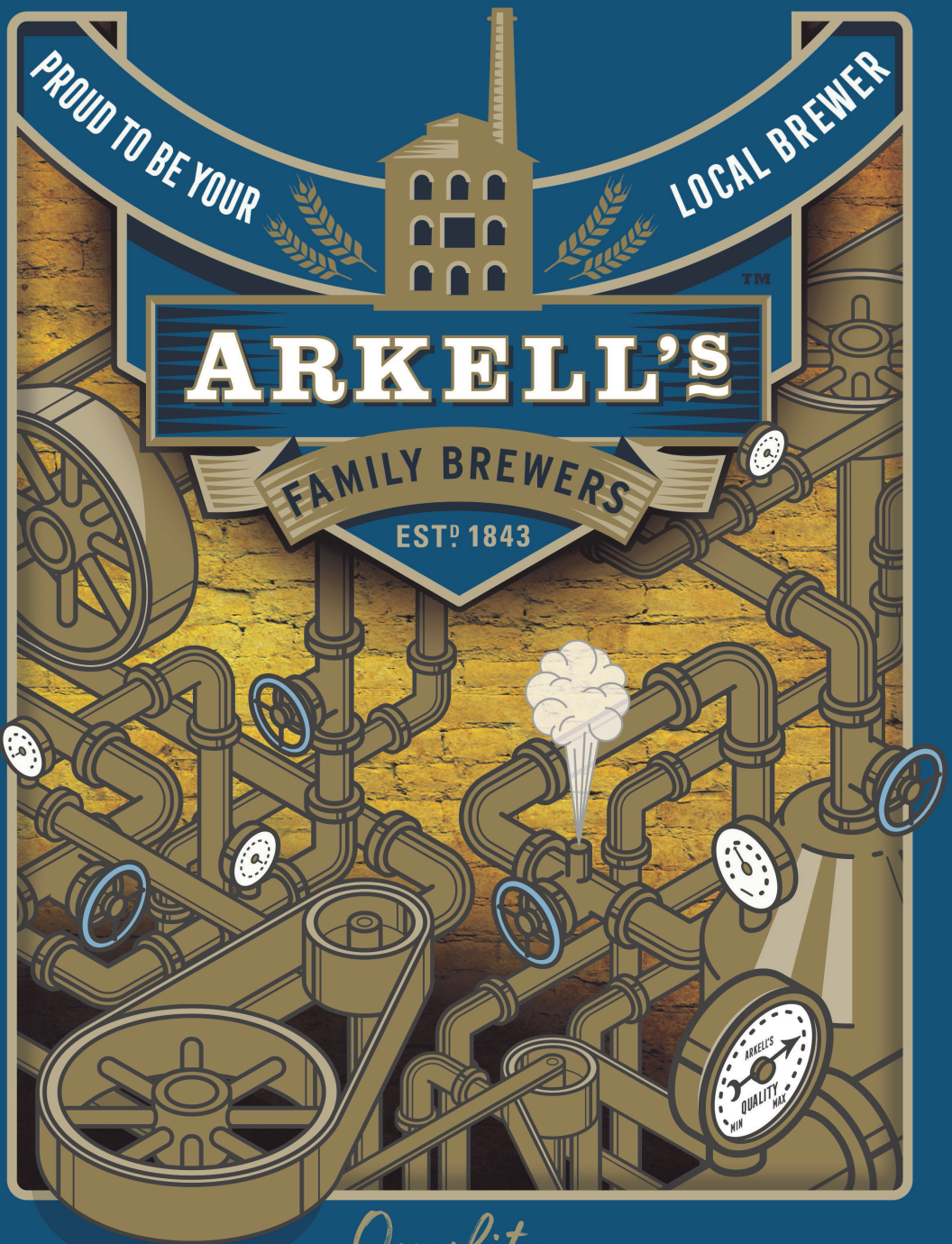
Join the CAMRA story
camra.org.uk/join



Campaign
for
Real Ale

Real stories, real people, **real ale**





Quality
REFINED THROUGH THE GENERATIONS
www.arkells.com

A man with glasses, wearing a tan cap and a brown apron over a red t-shirt, is smiling broadly while holding a large, silver metal cask. He is standing in what appears to be a brewery or a similar industrial setting with stainless steel equipment in the background.

LWC

THE UK'S LARGEST INDEPENDENT CASK WHOLESALER

& Official supplier to CAMRA

LWC is the UK's largest composite drinks wholesaler, we have the largest selection of beers, wines, spirits and soft drinks, along with a designated cask coordinator & wine specialist at every depot.

We pride ourselves on our product range and service.

To find out more about LWC and our product range, please get in touch with us:
01249 474230 | wiltshire@lwc-drinks.co.uk